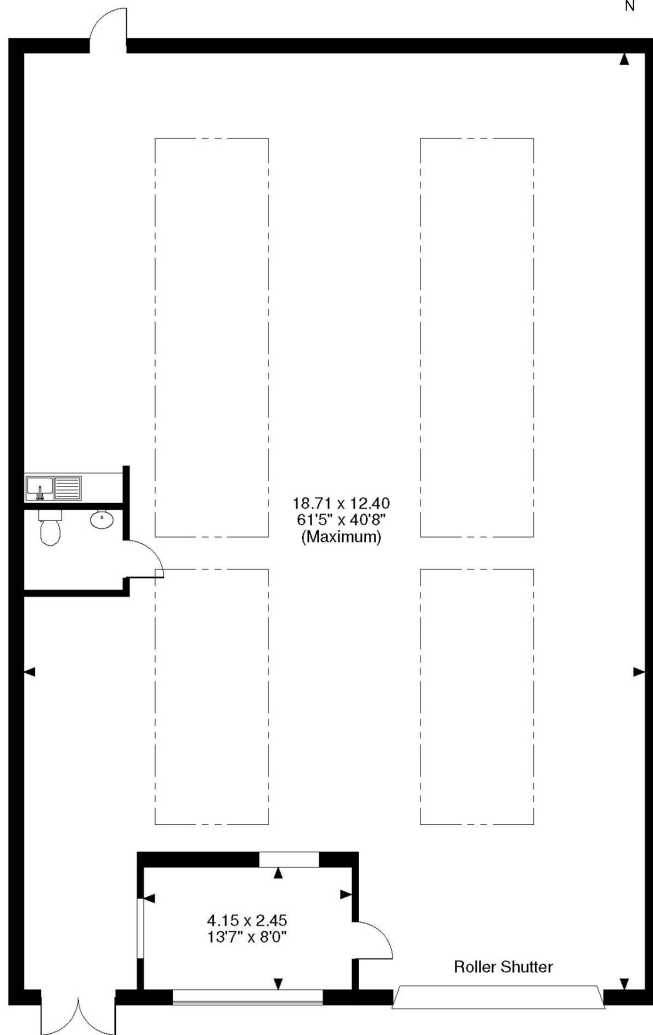


Floor Plans

D - 20 - 2443 sq ft | **Lion Business Park**

 Dering Way, Gravesend, Kent, DA12 2DN

Unit D20, Lion Business Park, Dering Way, Gravesend
2497 Sq Ft/232 Sq M



FOR ILLUSTRATIVE PURPOSES ONLY - NOT TO SCALE
The position & size of doors, windows, appliances and other features are approximate only.
© ehouse. Unauthorised reproduction prohibited. Drawing ref. dig/8360192/KWL

enquiries@industrials.co.uk

0800 122 3690

 For more info please visit: unit.info/U000361